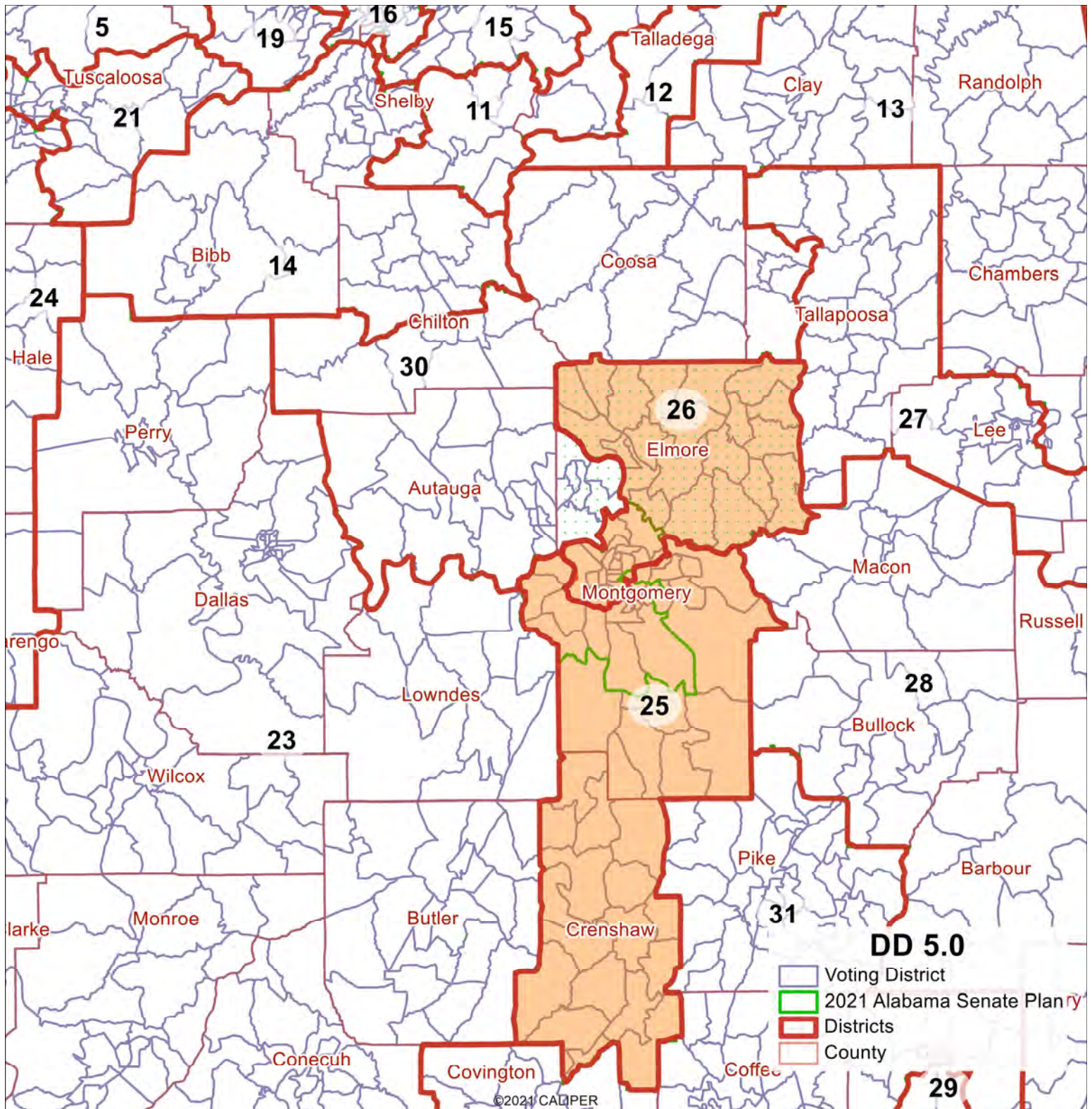


EXHIBIT 12



D.D. Plan 5.0

Plan Characteristics	D.D. Plan 5.0
Maximum Population Deviation	14,313
Contiguous	Yes
Core Retention (% Population in Same District as in Enacted Plan): Statewide	97.6%
County Splits (out of 67 counties)	19
Voting District Splits (out of 1,837 voting districts)	14
Municipality Splits (out of 462 municipalities)	84
Montgomery Split (% Population in District 25 / District 26)	53.8% / 46.2%
Compactness: Reock Score: Statewide	0.41
Compactness: Polsby-Popper Score: Statewide	0.26
Compactness: Population Polygon Score: Statewide	0.69
Compactness: Cut Edges: Statewide	8,758

District Characteristics	District 25	District 26
Total Population	148,124	148,126
Core Retention (compared to Enacted Plan)	59.4%	59.6%
Compactness: Reock Score	0.34	0.48
Compactness: Polsby-Popper Score	0.20	0.28
Compactness: Population Polygon Score	0.60	0.62
Black Voting Age Population	51.1%	43.9%

Election Performance Analysis – The percentage below is the margin of victory or defeat of the Black-preferred candidate (equal to the vote count for the Black-preferred candidate minus the vote count for the other top-vote getting candidate, divided by the total number of votes of those two candidates, excluding third-party or other votes). The average is a simple average (equally weighted) of all unique election contests without duplicates.

Election Contest	District 25		District 26	
	% Votes for BPC	Margin of Victory (or Defeat)	% Votes for BPC	Margin of Victory (or Defeat)
Eleven Biracial Elections				
2014 Auditor	47.4%	-5.2%	41.3%	-17.5%
2014 Lt. Governor	51.2%	2.3%	48.4%	-3.2%
2014 Secretary of State	50.6%	1.2%	47.6%	-4.7%
2018 Auditor	58.0%	16.0%	52.5%	4.9%
2018 Lt. Governor	56.2%	12.4%	50.9%	1.8%
2018 Pub. Serv. Commission (Place 1)	57.5%	15.1%	52.1%	4.1%
2022 Attorney General	52.0%	4.0%	43.8%	-12.3%
2022 Governor	49.8%	-0.3%	42.4%	-15.2%
2022 Secretary of State	52.5%	5.0%	44.3%	-11.5%
2022 Supreme Court Assoc. Justice	52.7%	5.5%	44.2%	-11.5%
2022 U.S. Senate	51.5%	3.1%	43.7%	-12.6%
Subtotal – Average	52.7%	5.4%	46.5%	-7.1%
Subtotal – Contests Won	9 of 11	-	3 of 11	-
Additional Elections				
2017 U.S. Senate	66.5%	33.1%	61.6%	23.2%
2018 Attorney General	59.2%	18.5%	53.6%	7.3%
2018 Governor	56.1%	12.1%	50.7%	1.4%
2018 Secretary of State	56.3%	12.7%	51.1%	2.1%
2020 President	57.4%	14.8%	52.4%	4.8%
2020 U.S. Senate	59.1%	18.2%	54.1%	8.2%
Total – Average	55.0%	9.9%	49.1%	-1.8%
Total – Contests Won	15 of 17	-	9 of 17	-